

CHANNEL TYPES

PROJECT CHECKLIST

STYLE:

- ☐ FLUSH CHANNEL
- ☐ FLUSH CHANNEL WITH DIFFUSER
- ☐ RECESSED CHANNEL

LENGTH: _____

MOUNTING TYPE:

- ☐ BROADLINE INACTIVE TEXTILE PANEL
- ☐ WEAVE ACTIVE TEXTILE PANEL
- ☐ TRIMLESS (RECESSED CHANNEL ONLY)

DEVICE 1 TYPE: _____

DEVICE 1 LOCATION: _____

DEVICE 2 TYPE: _____

DEVICE 2 LOCATION: _____

DEVICE 3 TYPE: _____

DEVICE 3 LOCATION: _____

DEVICE 4 TYPE: _____

DEVICE 4 LOCATION: _____

DEVICE 5 TYPE: _____

DEVICE 5 LOCATION: _____

END CONDITIONS:

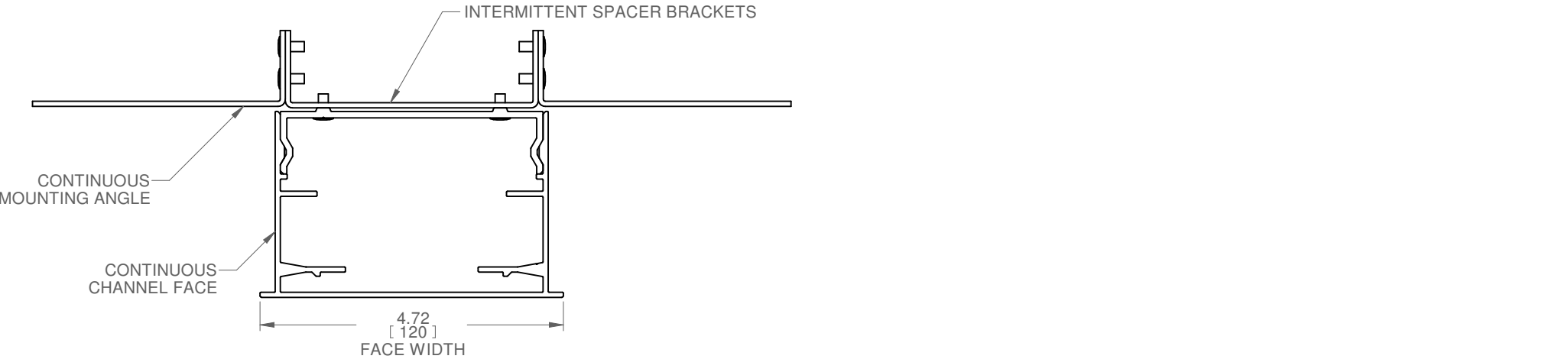
- ☐ OPEN
- ☐ LEFT HAND END CAP
- ☐ RIGHT HAND END CAP
- ☐ BOTH END CAPS

HOUSING COLOR (RECESSED CHANNEL):

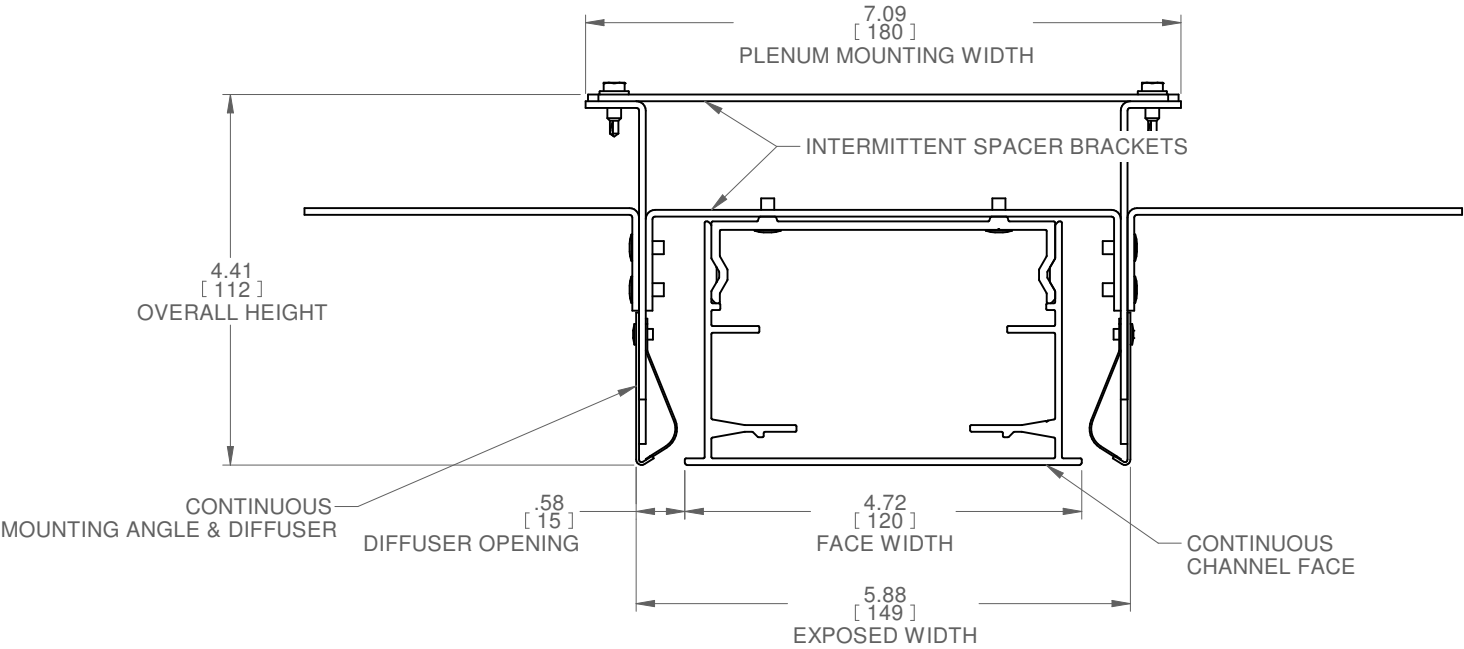
- ☐ BLACK POLYMER - B17
- ☐ WHITE POLYMER - RAL 9016

CHANNEL FINISH:

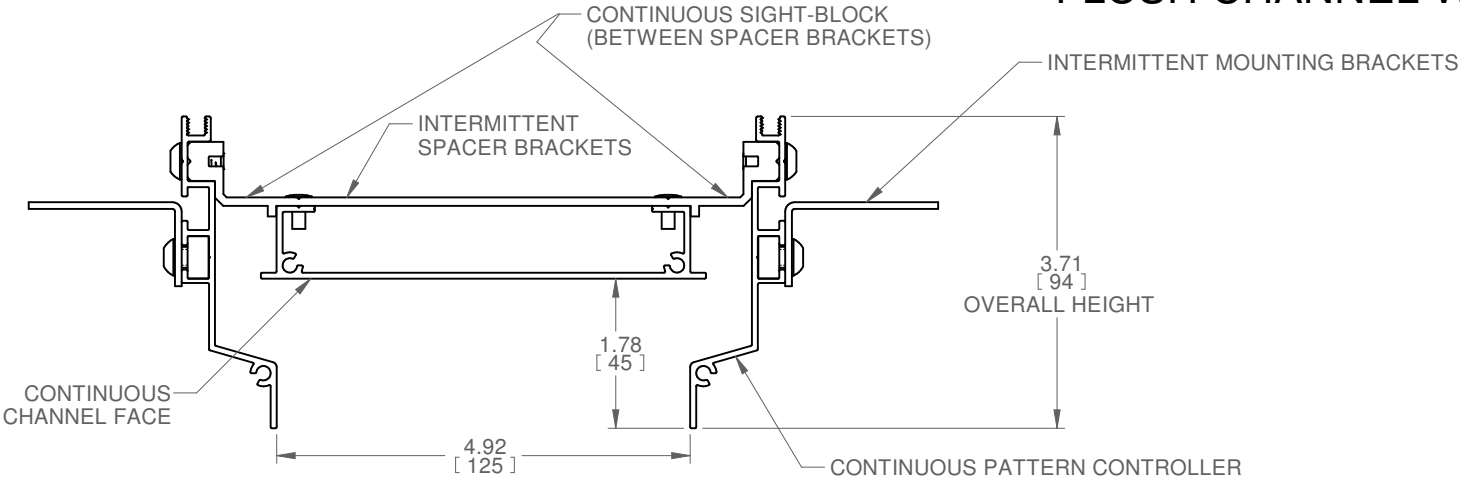
- ☐ BLACK - PRICE B17
- ☐ WHITE - RAL 9016
- ☐ ANODIZED - CLEAR SATIN
- ☐ ANODIZED - CHAMPAGNE SATIN
- ☐ ANODIZED - LIGHT BRONZE SATIN
- ☐ ANODIZED - MEDIUM BRONZE SATIN
- ☐ ANODIZED - DARK BRONZE SATIN
- ☐ ANODIZED - BLACK SATIN



FLUSH CHANNEL



FLUSH CHANNEL WITH DIFFUSER



RECESSED CHANNEL

CONSTRUCTION:

- FLUSH CHANNEL
 - o ALUMINUM EXTRUSION
 - o ALUMINUM SHEET
 - o STEEL SHEET
- RECESSED CHANNEL
 - o ALUMINUM EXTRUSION
 - o ALUMINUM SHEET

FINISH:

- ALL HARDWARE; MILL FINISH UNLESS OTHERWISE SPECIFIED

ELECTRICAL SERVICE

- SEE SPECIFIC NODE DEVICE REQUIREMENTS

MECHANICAL SERVICE

- CONTACT PRICE SALES REPRESENTATIVE

CONTROLS

- CONTROLS BY OTHERS

NOMENCLATURE

- ALL COMPONENTS SHOWN ARE PROVIDED BY PRICE UNLESS OTHERWISE NOTED
- (INSTL BY OTHERS); PROVIDED BY PRICE AND INSTALLED BY OTHERS
- (BY OTHERS); PROVIDED AND INSTALLED BY OTHERS
- TBC: DETAILS TO BE CONFIRMED

NOTES:

- PRODUCT FINISH MAY VARY IN TONE, GLOSS AND TEXTURE; VARIATIONS ARE WITHIN PRICE INDUSTRIES' QUALITY STANDARDS
- REFERENCE SUBMITTAL 272380 FOR PLENUM DETAILS

E	2021-03-19	NPT	MLH
D	2020-05-27	NPT	MLH
C	2020-03-25	NPT	MLH
B	2020-03-12	NPT	MLH
A	2019-11-27	NPT	MLH
REV	DATE	DRAWN BY	CHECKED BY

	ALL DIMENSIONS IN INCHES UNLESS OTHERWISE SPECIFIED
--	---

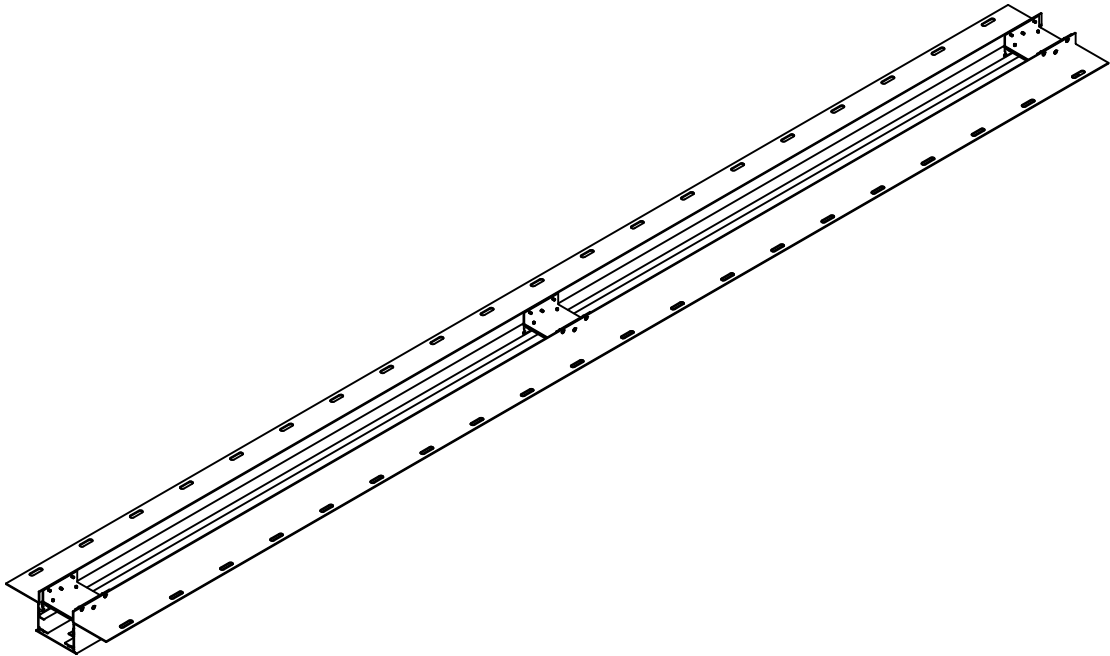
TOLERANCES UNLESS OTHERWISE SPECIFIED			
LINEAR	X.X ± .06	X.XX ± .03	X.XXX ± .01 INCHES
ANGULAR	X ± 1	X.X ± .5	X.XX ± .25 DEGREES

PROJECT			
---------	--	--	--

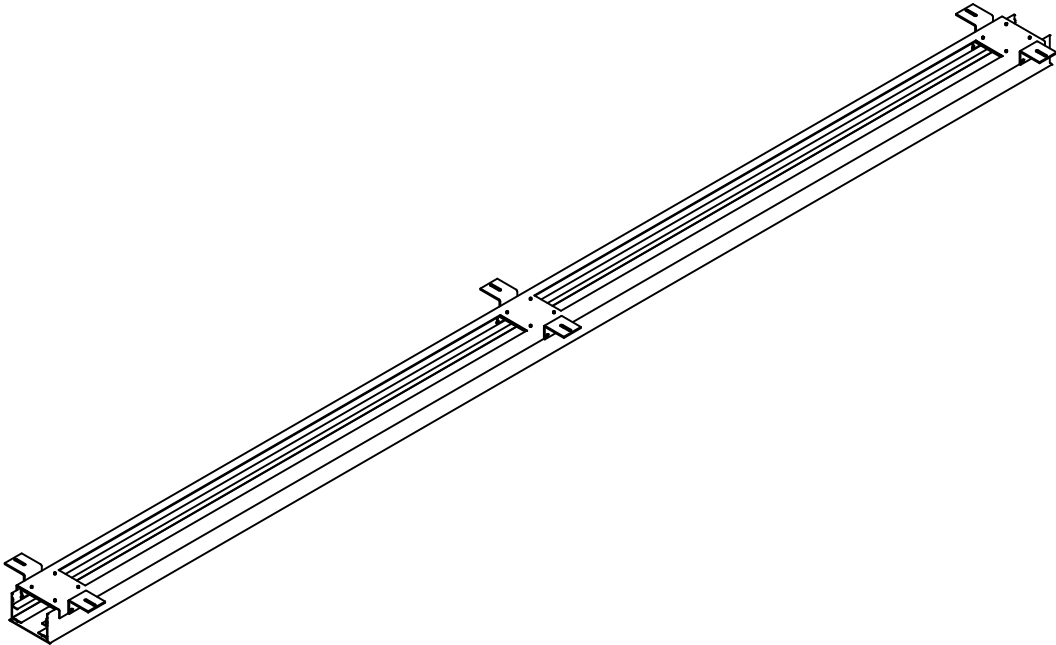
DRAWING TITLE			
NODE CHANNEL			

SUBMITTAL NUMBER	271710	SHEET 1 OF 9	SIZE B
© COPYRIGHT PRICE INDUSTRIES 2020			

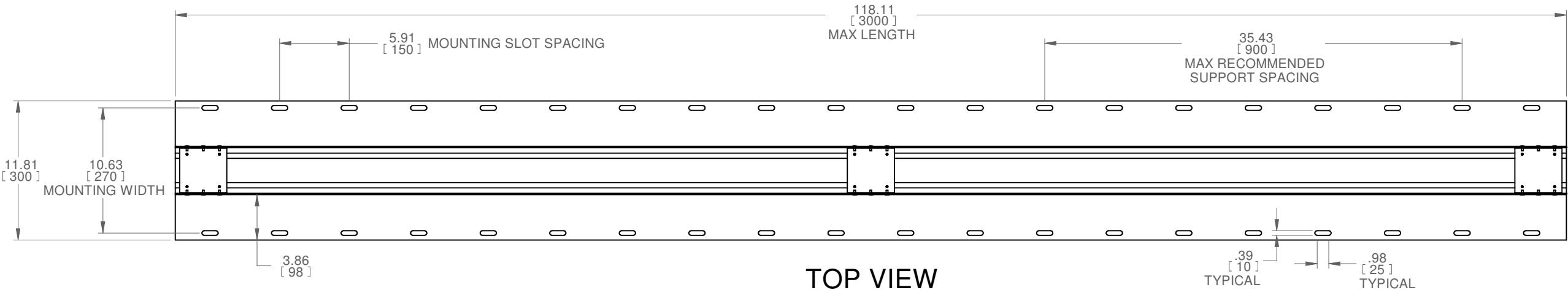
GENERAL CONTRUCTION - FLUSH CHANNEL



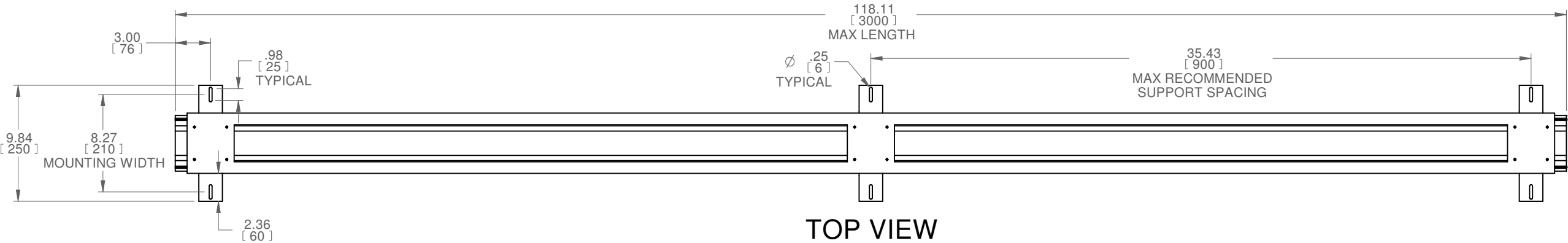
ISOMETRIC VIEW
BROADLINE INACTIVE TEXTILE PANEL



ISOMETRIC VIEW
WEAVE ACTIVE TEXTILE PANEL





TOP VIEW
BROADLINE INACTIVE TEXTILE PANEL

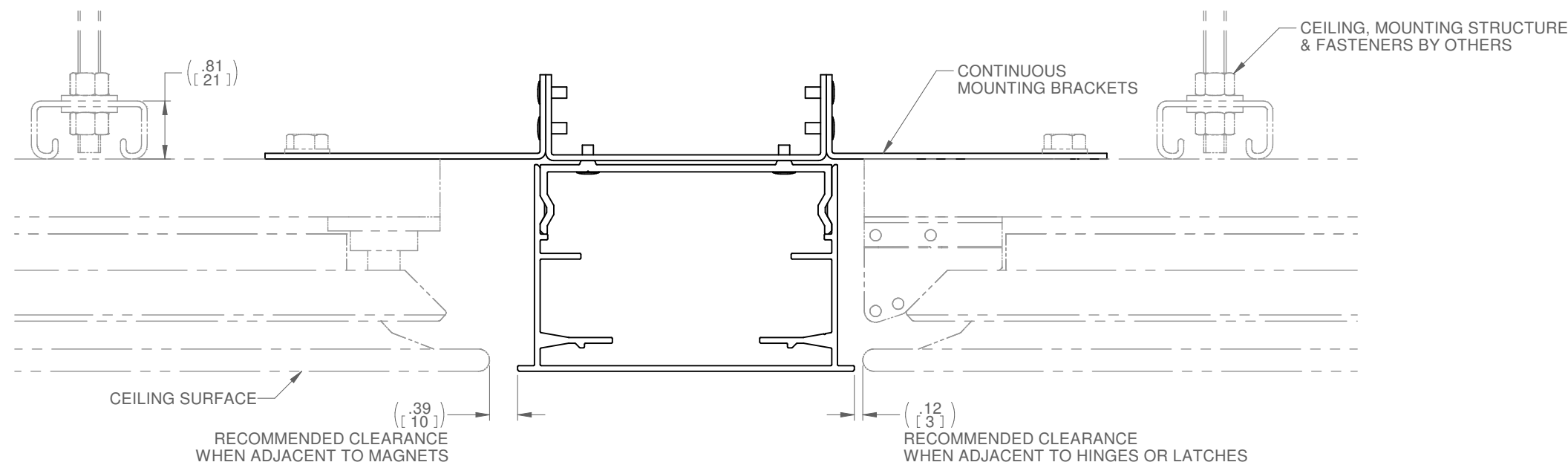


TOP VIEW
WEAVE ACTIVE TEXTILE PANEL

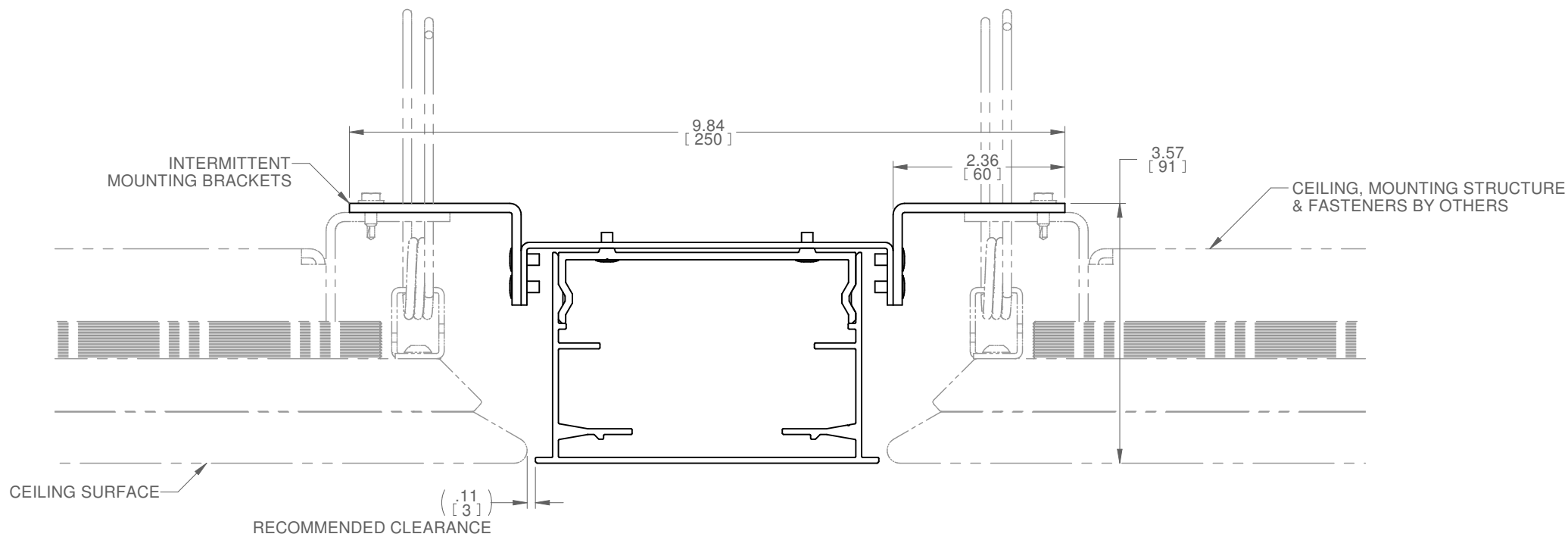
- CONSTRUCTION:**
- FLUSH CHANNEL
 - o ALUMINUM EXTRUSION
 - o ALUMINUM SHEET
 - o STEEL SHEET
 - RECESSED CHANNEL
 - o ALUMINUM EXTRUSION
 - o ALUMINUM SHEET
- FINISH:**
- ALL HARDWARE; MILL FINISH UNLESS OTHERWISE SPECIFIED
- ELECTRICAL SERVICE**
- SEE SPECIFIC NODE DEVICE REQUIREMENTS
- MECHANICAL SERVICE**
- CONTACT PRICE SALES REPRESENTATIVE
- CONTROLS**
- CONTROLS BY OTHERS
- NOMENCLATURE**
- ALL COMPONENTS SHOWN ARE PROVIDED BY PRICE UNLESS OTHERWISE NOTED
 - (INSTL BY OTHERS); PROVIDED BY PRICE AND INSTALLED BY OTHERS
 - (BY OTHERS); PROVIDED AND INSTALLED BY OTHERS
 - TBC: DETAILS TO BE CONFIRMED
- NOTES:**
- PRODUCT FINISH MAY VARY IN TONE, GLOSS AND TEXTURE; VARIATIONS ARE WITHIN PRICE INDUSTRIES' QUALITY STANDARDS
 - REFERENCE SUBMITTAL 272380 FOR PLENUM DETAILS

E	2021-03-19	NPT	MLH
D	2020-05-27	NPT	MLH
C	2020-03-25	NPT	MLH
B	2020-03-12	NPT	MLH
A	2019-11-27	NPT	MLH
REV	DATE	DRAWN BY	CHECKED BY
 		ALL DIMENSIONS IN INCHES UNLESS OTHERWISE SPECIFIED	
TOLERANCES UNLESS OTHERWISE SPECIFIED			
LINEAR	X.X ± .06	X.XX ± .03	X.XXX ± .01 INCHES
ANGULAR	X ± 1	X.X ± .5	X.XX ± .25 DEGREES
PROJECT			
DRAWING TITLE			
NODE CHANNEL			
SUBMITTAL NUMBER	271710	SHEET 2 OF 9	SIZE B
© COPYRIGHT PRICE INDUSTRIES 2020			

MOUNTING TYPE - FLUSH CHANNEL



ELEVATION VIEW
BROADLINE INACTIVE TEXTILE PANEL



ELEVATION VIEW
WEAVE ACTIVE TEXTILE PANEL

CONSTRUCTION:

- FLUSH CHANNEL
 - o ALUMINUM EXTRUSION
 - o ALUMINUM SHEET
 - o STEEL SHEET
- RECESSED CHANNEL
 - o ALUMINUM EXTRUSION
 - o ALUMINUM SHEET

FINISH:

- ALL HARDWARE; MILL FINISH UNLESS OTHERWISE SPECIFIED

ELECTRICAL SERVICE

- SEE SPECIFIC NODE DEVICE REQUIREMENTS

MECHANICAL SERVICE

- CONTACT PRICE SALES REPRESENTATIVE

CONTROLS

- CONTROLS BY OTHERS

NOMENCLATURE

- ALL COMPONENTS SHOWN ARE PROVIDED BY PRICE UNLESS OTHERWISE NOTED
- (INSTL BY OTHERS): PROVIDED BY PRICE AND INSTALLED BY OTHERS
- (BY OTHERS): PROVIDED AND INSTALLED BY OTHERS
- TBC: DETAILS TO BE CONFIRMED

NOTES:

- PRODUCT FINISH MAY VARY IN TONE, GLOSS AND TEXTURE; VARIATIONS ARE WITHIN PRICE INDUSTRIES' QUALITY STANDARDS
- REFERENCE SUBMITTAL 272380 FOR PLENUM DETAILS

REV	DATE	DRAWN BY	CHECKED BY
E	2021-03-19	NPT	MLH
D	2020-05-27	NPT	MLH
C	2020-03-25	NPT	MLH
B	2020-03-12	NPT	MLH
A	2019-11-27	NPT	MLH

	ALL DIMENSIONS IN INCHES UNLESS OTHERWISE SPECIFIED
--	---

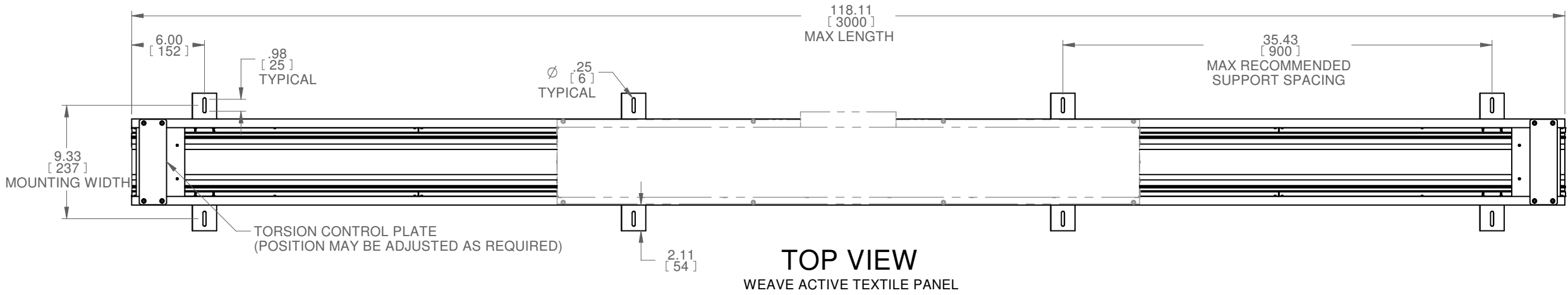
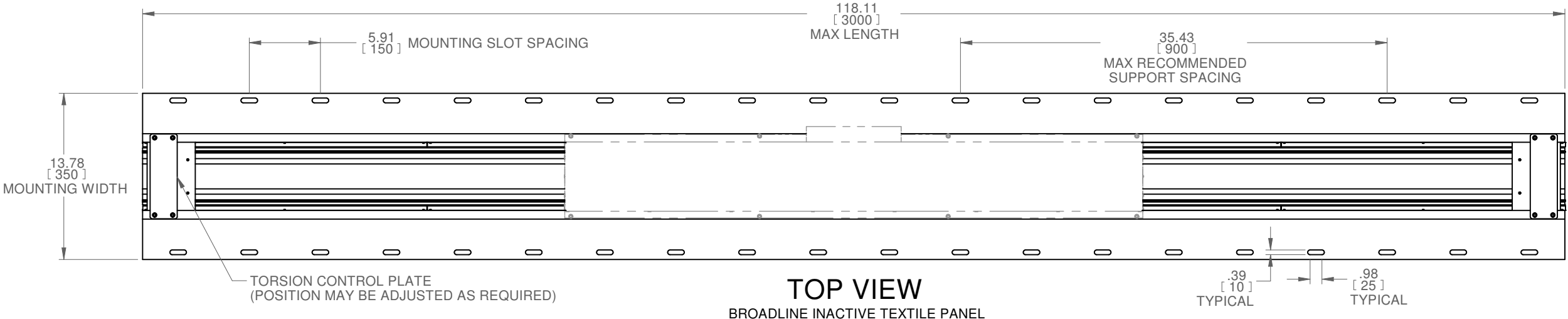
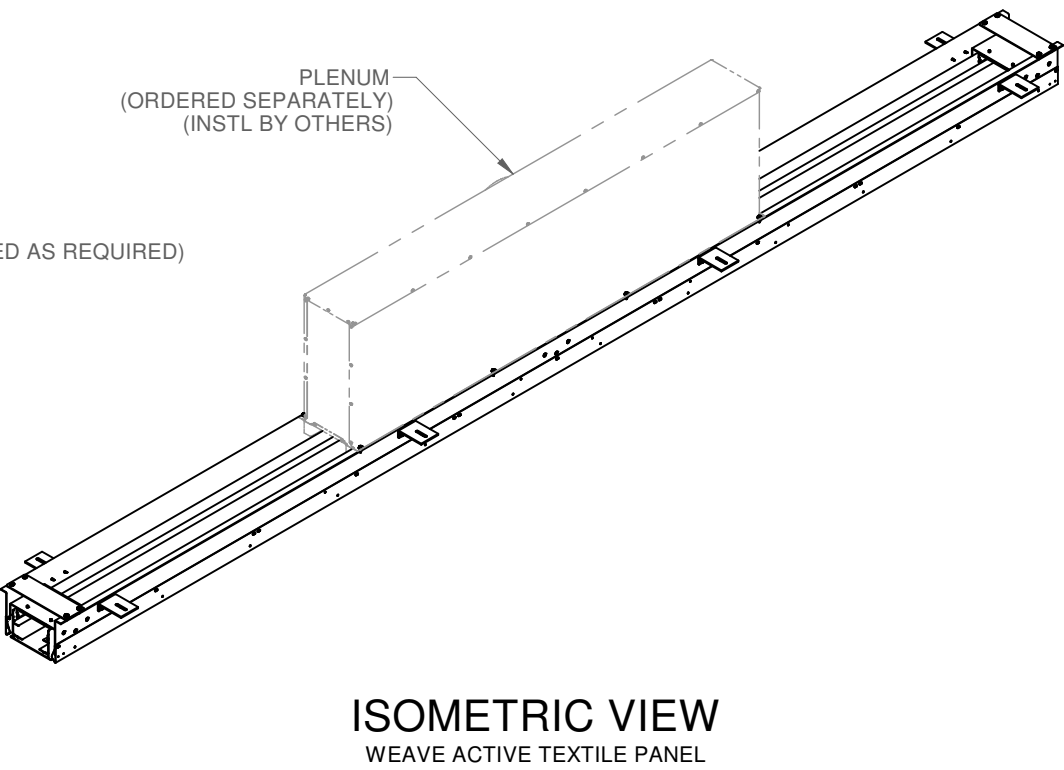
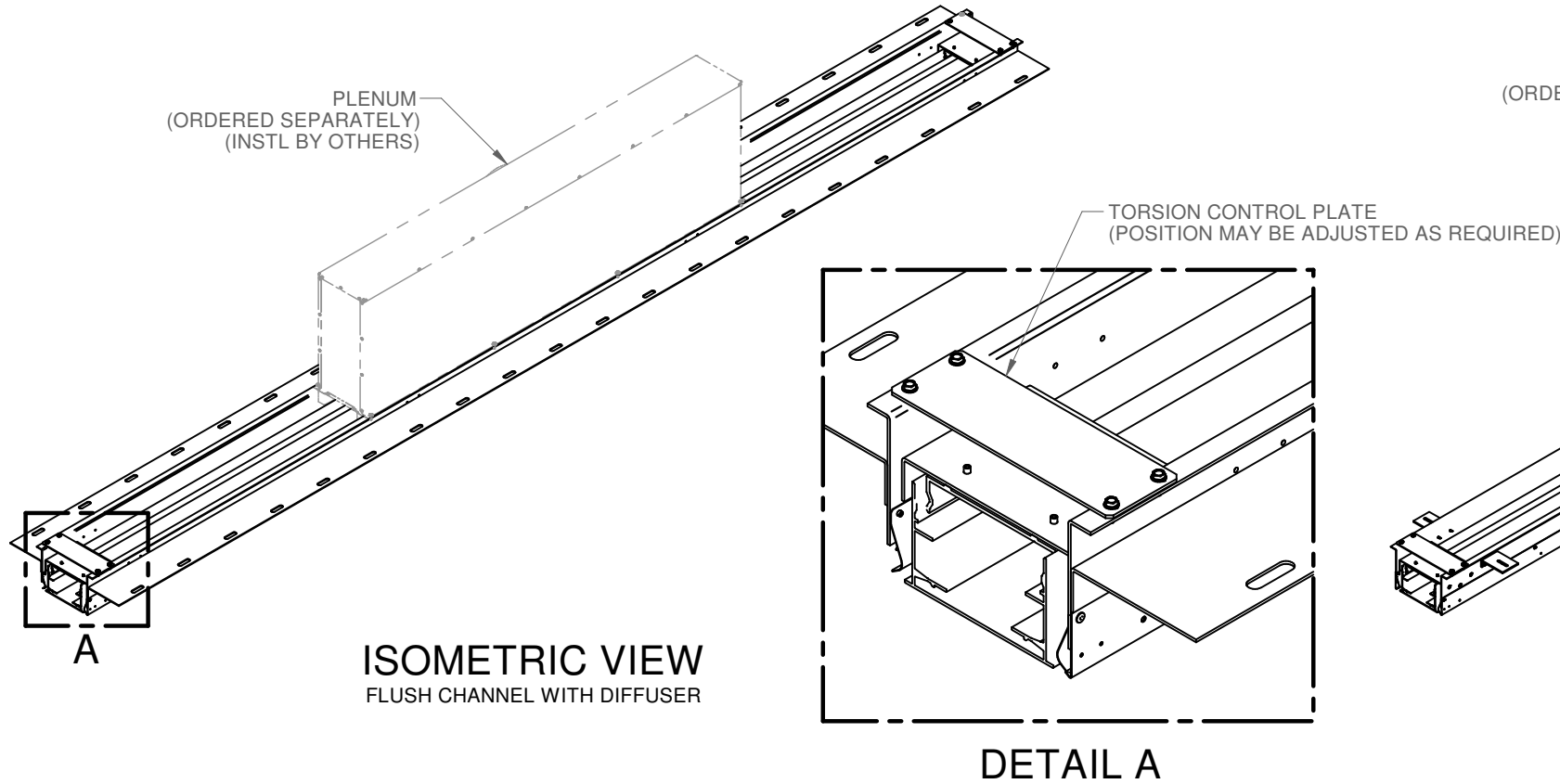
TOLERANCES UNLESS OTHERWISE SPECIFIED			
LINEAR	X.X ± .06	X.XX ± .03	X.XXX ± .01 INCHES
ANGULAR	X ± 1	X.X ± .5	X.XX ± .25 DEGREES

PROJECT			
---------	--	--	--

DRAWING TITLE			
NODE CHANNEL			

SUBMITTAL NUMBER	271710	SHEET 3 OF 9	SIZE B
© COPYRIGHT PRICE INDUSTRIES 2020			

GENERAL CONTRUCTION - FLUSH CHANNEL WITH DIFFUSER



- CONSTRUCTION:**
- FLUSH CHANNEL
 - o ALUMINUM EXTRUSION
 - o ALUMINUM SHEET
 - o STEEL SHEET
 - RECESSED CHANNEL
 - o ALUMINUM EXTRUSION
 - o ALUMINUM SHEET
- FINISH:**
- ALL HARDWARE; MILL FINISH UNLESS OTHERWISE SPECIFIED
- ELECTRICAL SERVICE**
- SEE SPECIFIC NODE DEVICE REQUIREMENTS
- MECHANICAL SERVICE**
- CONTACT PRICE SALES REPRESENTATIVE
- CONTROLS**
- CONTROLS BY OTHERS
- NOMENCLATURE**
- ALL COMPONENTS SHOWN ARE PROVIDED BY PRICE UNLESS OTHERWISE NOTED
 - (INSTL BY OTHERS): PROVIDED BY PRICE AND INSTALLED BY OTHERS
 - (BY OTHERS): PROVIDED AND INSTALLED BY OTHERS
 - TBC: DETAILS TO BE CONFIRMED
- NOTES:**
- PRODUCT FINISH MAY VARY IN TONE, GLOSS AND TEXTURE; VARIATIONS ARE WITHIN PRICE INDUSTRIES' QUALITY STANDARDS
 - REFERENCE SUBMITTAL 272380 FOR PLENUM DETAILS

REV	DATE	DRAWN BY	CHECKED BY
E	2021-03-19	NPT	MLH
D	2020-05-27	NPT	MLH
C	2020-03-25	NPT	MLH
B	2020-03-12	NPT	MLH
A	2019-11-27	NPT	MLH

	ALL DIMENSIONS IN INCHES UNLESS OTHERWISE SPECIFIED
--	---

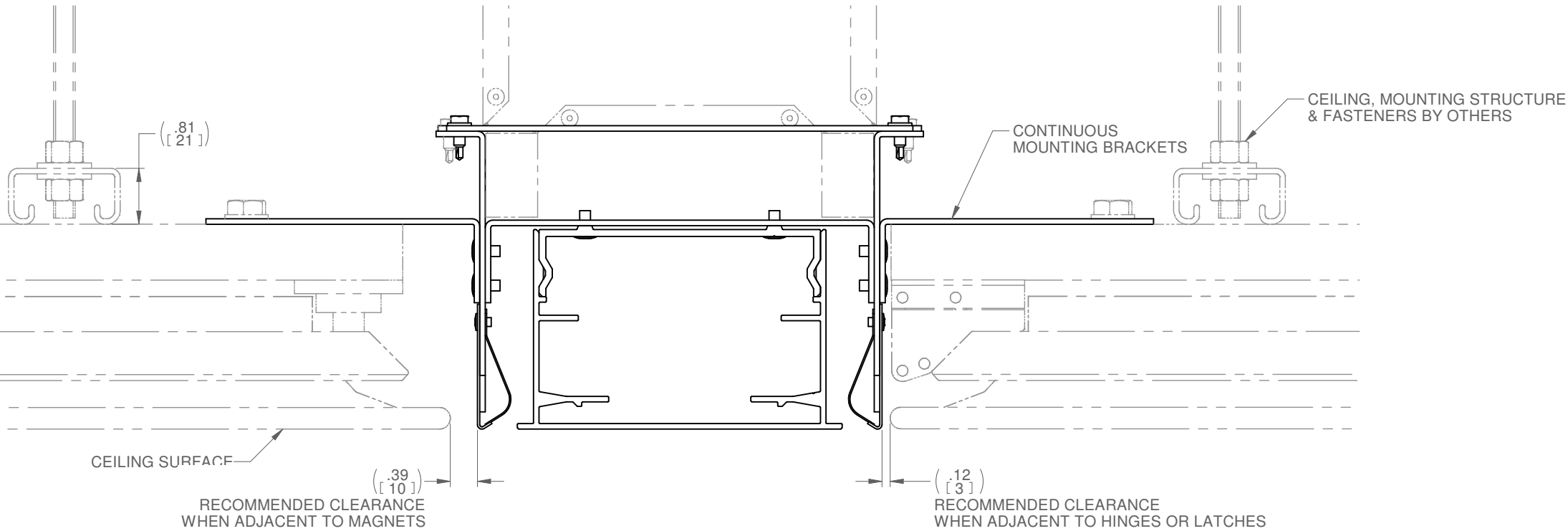
TOLERANCES UNLESS OTHERWISE SPECIFIED			
LINEAR	X.X ± .06	X.XX ± .03	X.XXX ± .01 INCHES
ANGULAR	X ± 1	X.X ± .5	X.XX ± .25 DEGREES

PROJECT

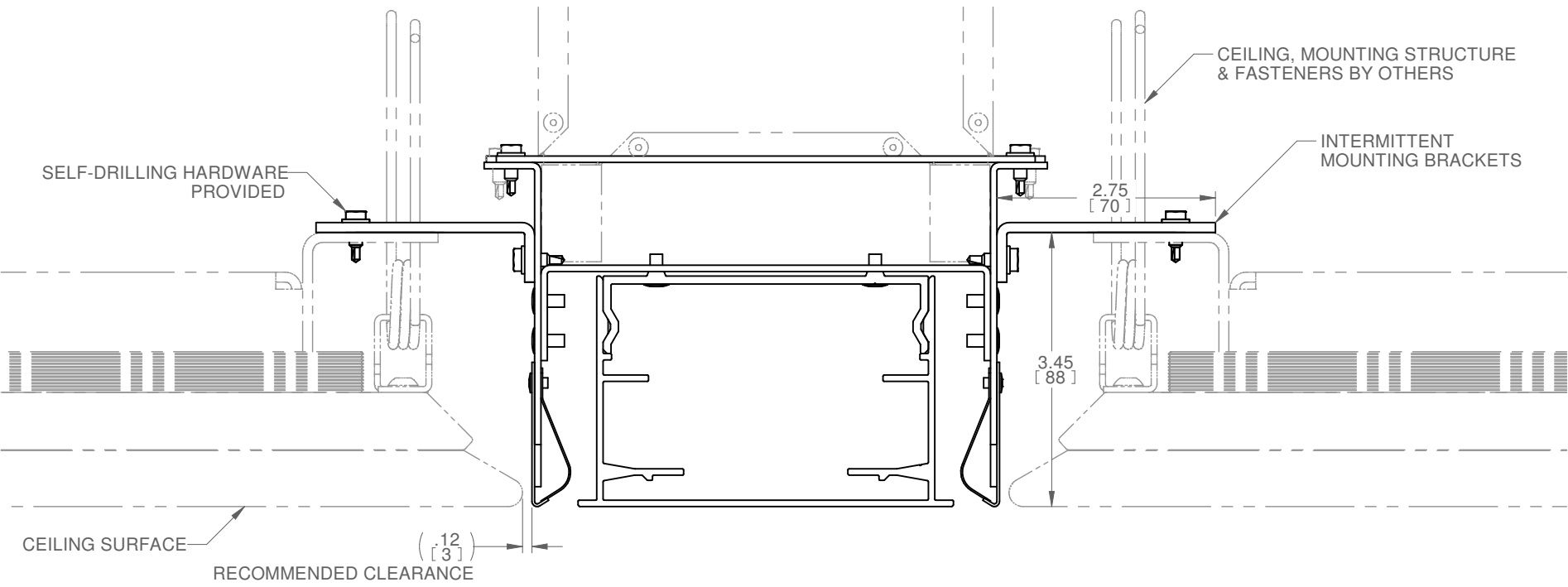
DRAWING TITLE

SUBMITTAL NUMBER	271710	SHEET 4 OF 9	SIZE B
© COPYRIGHT PRICE INDUSTRIES 2020			

MOUNTING TYPE - FLUSH CHANNEL WITH DIFFUSER



ELEVATION VIEW
BROADLINE INACTIVE TEXTILE PANEL



ELEVATION VIEW
WEAVE ACTIVE TEXTILE PANEL

- CONSTRUCTION:**
- FLUSH CHANNEL
 - o ALUMINUM EXTRUSION
 - o ALUMINUM SHEET
 - o STEEL SHEET
 - RECESSED CHANNEL
 - o ALUMINUM EXTRUSION
 - o ALUMINUM SHEET
- FINISH:**
- ALL HARDWARE; MILL FINISH UNLESS OTHERWISE SPECIFIED
- ELECTRICAL SERVICE**
- SEE SPECIFIC NODE DEVICE REQUIREMENTS
- MECHANICAL SERVICE**
- CONTACT PRICE SALES REPRESENTATIVE
- CONTROLS**
- CONTROLS BY OTHERS
- NOMENCLATURE**
- ALL COMPONENTS SHOWN ARE PROVIDED BY PRICE UNLESS OTHERWISE NOTED
 - (INSTL BY OTHERS): PROVIDED BY PRICE AND INSTALLED BY OTHERS
 - (BY OTHERS): PROVIDED AND INSTALLED BY OTHERS
 - TBC: DETAILS TO BE CONFIRMED
- NOTES:**
- PRODUCT FINISH MAY VARY IN TONE, GLOSS AND TEXTURE; VARIATIONS ARE WITHIN PRICE INDUSTRIES' QUALITY STANDARDS
 - REFERENCE SUBMITTAL 272380 FOR PLENUM DETAILS

E	2021-03-19	NPT	MLH
D	2020-05-27	NPT	MLH
C	2020-03-25	NPT	MLH
B	2020-03-12	NPT	MLH
A	2019-11-27	NPT	MLH

REV	DATE	DRAWN BY	CHECKED BY

	ALL DIMENSIONS IN INCHES UNLESS OTHERWISE SPECIFIED
--	---

TOLERANCES UNLESS OTHERWISE SPECIFIED			
LINEAR	X.X ± .06	X.XX ± .03	X.XXX ± .01 INCHES
ANGULAR	X ± 1	X.X ± .5	X.XX ± .25 DEGREES

PROJECT			
DRAWING TITLE			
NODE CHANNEL			

SUBMITTAL NUMBER	271710	SHEET 5 OF 9	SIZE B
© COPYRIGHT PRICE INDUSTRIES 2020			

GENERAL CONTRUCTION - RECESSED CHANNEL

PARC

A Price Company

WEBSITE: WWW.PARC-CEILINGS.COM

CONSTRUCTION:

- FLUSH CHANNEL
 - o ALUMINUM EXTRUSION
 - o ALUMINUM SHEET
 - o STEEL SHEET
- RECESSED CHANNEL
 - o ALUMINUM EXTRUSION
 - o ALUMINUM SHEET

FINISH:

- ALL HARDWARE; MILL FINISH UNLESS OTHERWISE SPECIFIED

ELECTRICAL SERVICE

- SEE SPECIFIC NODE DEVICE REQUIREMENTS

MECHANICAL SERVICE

- CONTACT PRICE SALES REPRESENTATIVE

CONTROLS

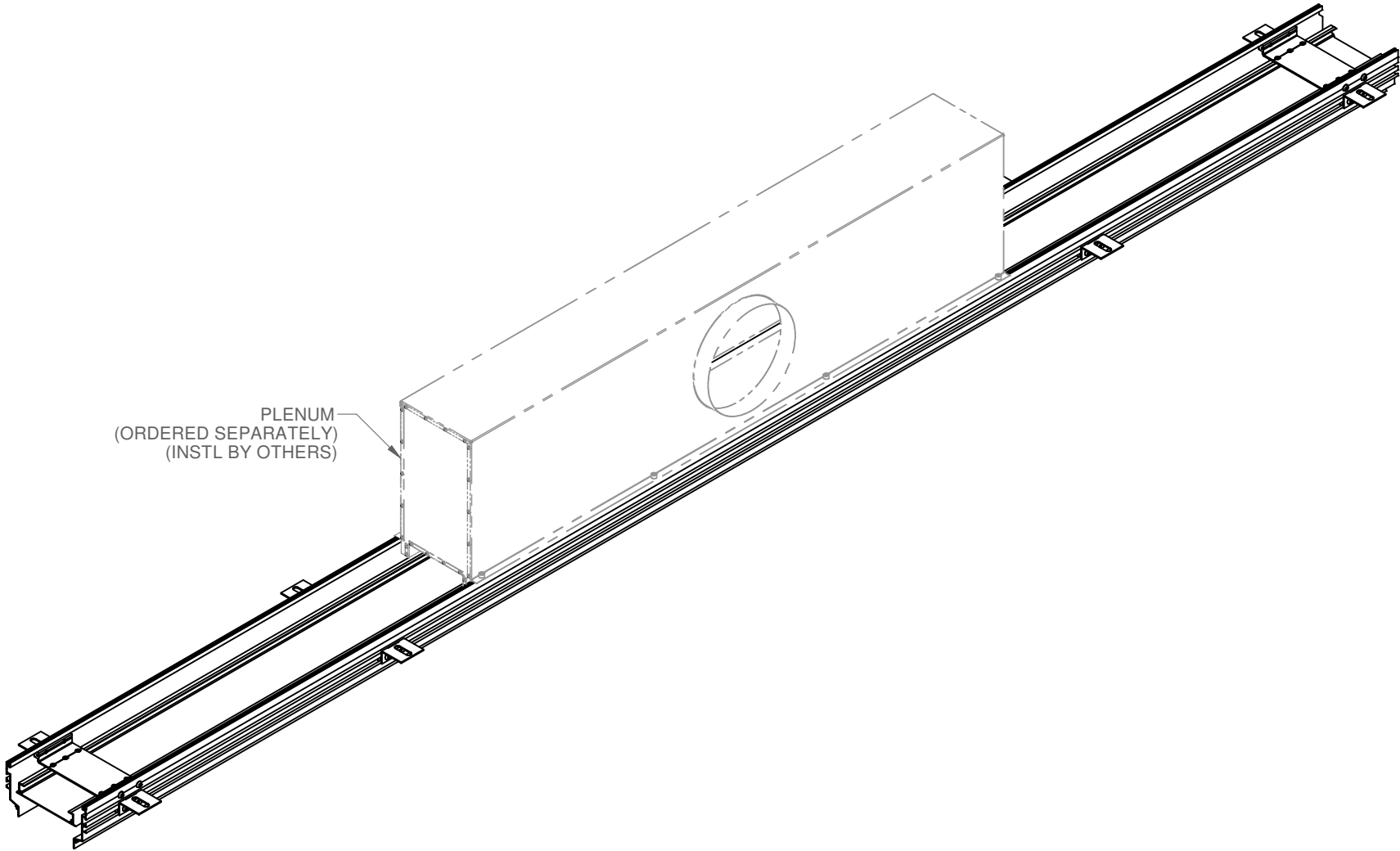
- CONTROLS BY OTHERS

NOMENCLATURE

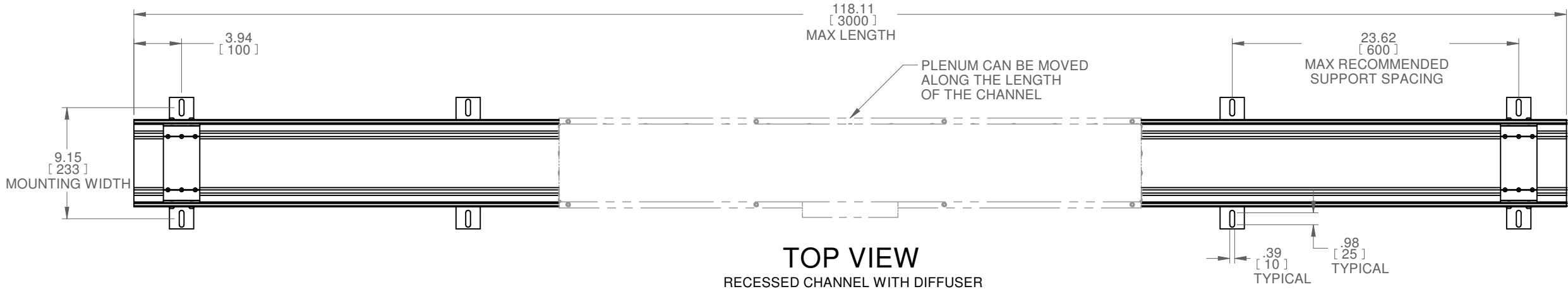
- ALL COMPONENTS SHOWN ARE PROVIDED BY PRICE UNLESS OTHERWISE NOTED
- (INSTL BY OTHERS); PROVIDED BY PRICE AND INSTALLED BY OTHERS
- (BY OTHERS); PROVIDED AND INSTALLED BY OTHERS
- TBC: DETAILS TO BE CONFIRMED

NOTES:

- PRODUCT FINISH MAY VARY IN TONE, GLOSS AND TEXTURE; VARIATIONS ARE WITHIN PRICE INDUSTRIES' QUALITY STANDARDS
- REFERENCE SUBMITTAL 272380 FOR PLENUM DETAILS



ISOMETRIC VIEW
RECESSED CHANNEL WITH DIFFUSER



E	2021-03-19	NPT	MLH
D	2020-05-27	NPT	MLH
C	2020-03-25	NPT	MLH
B	2020-03-12	NPT	MLH
A	2019-11-27	NPT	MLH
REV	DATE	DRAWN BY	CHECKED BY

ALL DIMENSIONS IN INCHES UNLESS OTHERWISE SPECIFIED

TOLERANCES UNLESS OTHERWISE SPECIFIED			
LINEAR	X.X ± .06	X.XX ± .03	X.XXX ± .01 INCHES
ANGULAR	X ± 1	X.X ± .5	X.XX ± .25 DEGREES

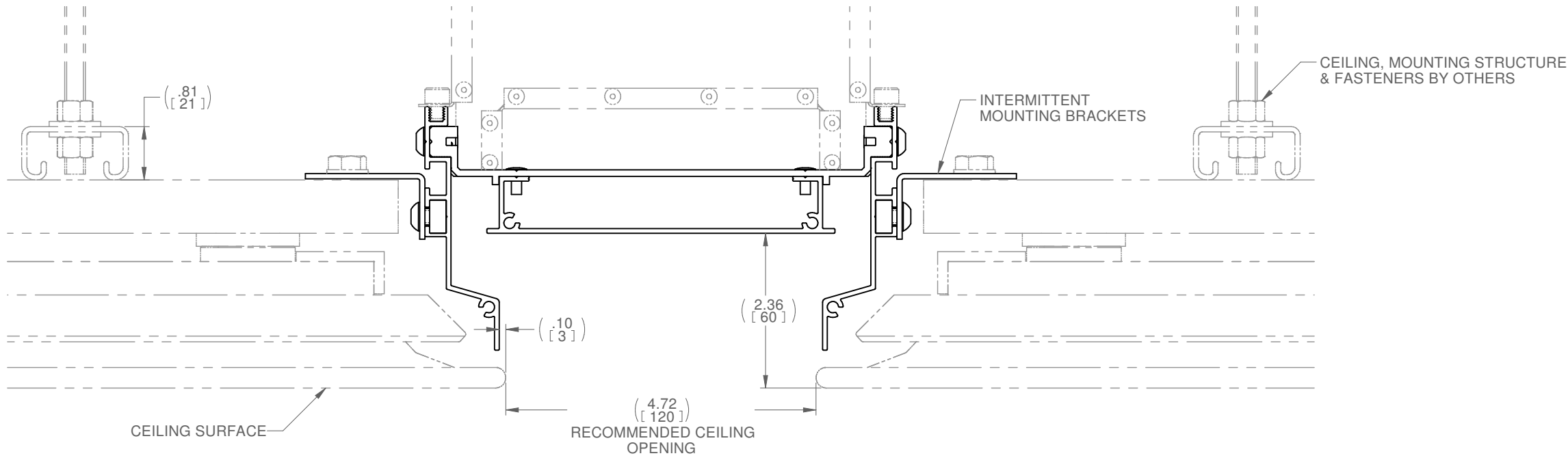
PROJECT

DRAWING TITLE

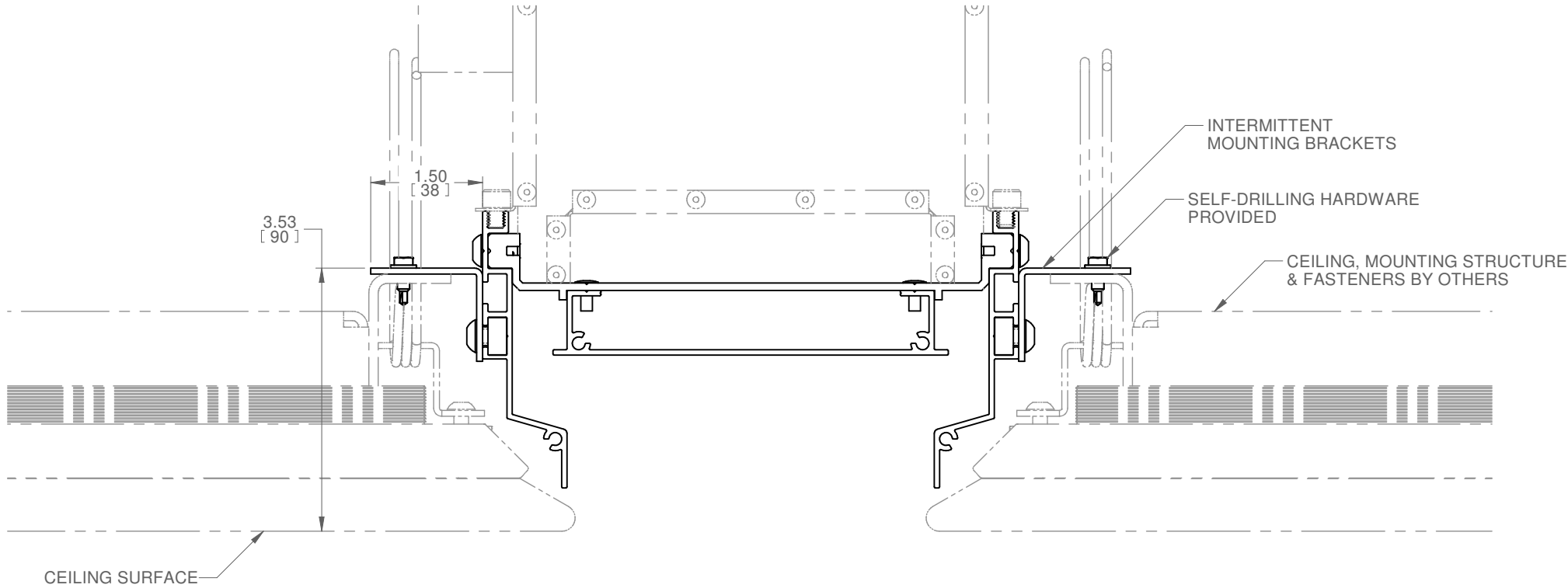
NODE CHANNEL

SUBMITTAL NUMBER	271710	SHEET 6 OF 9	SIZE B
© COPYRIGHT PRICE INDUSTRIES 2020			

MOUNTING TYPE - RECESSED CHANNEL



ELEVATION VIEW
BROADLINE INACTIVE TEXTILE PANEL



ELEVATION VIEW
WEAVE ACTIVE TEXTILE PANEL

CONSTRUCTION:

- FLUSH CHANNEL
 - o ALUMINUM EXTRUSION
 - o ALUMINUM SHEET
 - o STEEL SHEET
- RECESSED CHANNEL
 - o ALUMINUM EXTRUSION
 - o ALUMINUM SHEET

FINISH:

- ALL HARDWARE; MILL FINISH UNLESS OTHERWISE SPECIFIED

ELECTRICAL SERVICE

- SEE SPECIFIC NODE DEVICE REQUIREMENTS

MECHANICAL SERVICE

- CONTACT PRICE SALES REPRESENTATIVE

CONTROLS

- CONTROLS BY OTHERS

NOMENCLATURE

- ALL COMPONENTS SHOWN ARE PROVIDED BY PRICE UNLESS OTHERWISE NOTED
- (INSTL BY OTHERS): PROVIDED BY PRICE AND INSTALLED BY OTHERS
- (BY OTHERS): PROVIDED AND INSTALLED BY OTHERS
- TBC: DETAILS TO BE CONFIRMED

NOTES:

- PRODUCT FINISH MAY VARY IN TONE, GLOSS AND TEXTURE; VARIATIONS ARE WITHIN PRICE INDUSTRIES' QUALITY STANDARDS
- REFERENCE SUBMITTAL 272380 FOR PLENUM DETAILS

REV	DATE	DRAWN BY	CHECKED BY
E	2021-03-19	NPT	MLH
D	2020-05-27	NPT	MLH
C	2020-03-25	NPT	MLH
B	2020-03-12	NPT	MLH
A	2019-11-27	NPT	MLH

	ALL DIMENSIONS IN INCHES UNLESS OTHERWISE SPECIFIED
--	---

TOLERANCES UNLESS OTHERWISE SPECIFIED			
LINEAR	X.X ± .06	X.XX ± .03	X.XXX ± .01 INCHES
ANGULAR	X ± 1	X.X ± .5	X.XX ± .25 DEGREES

PROJECT

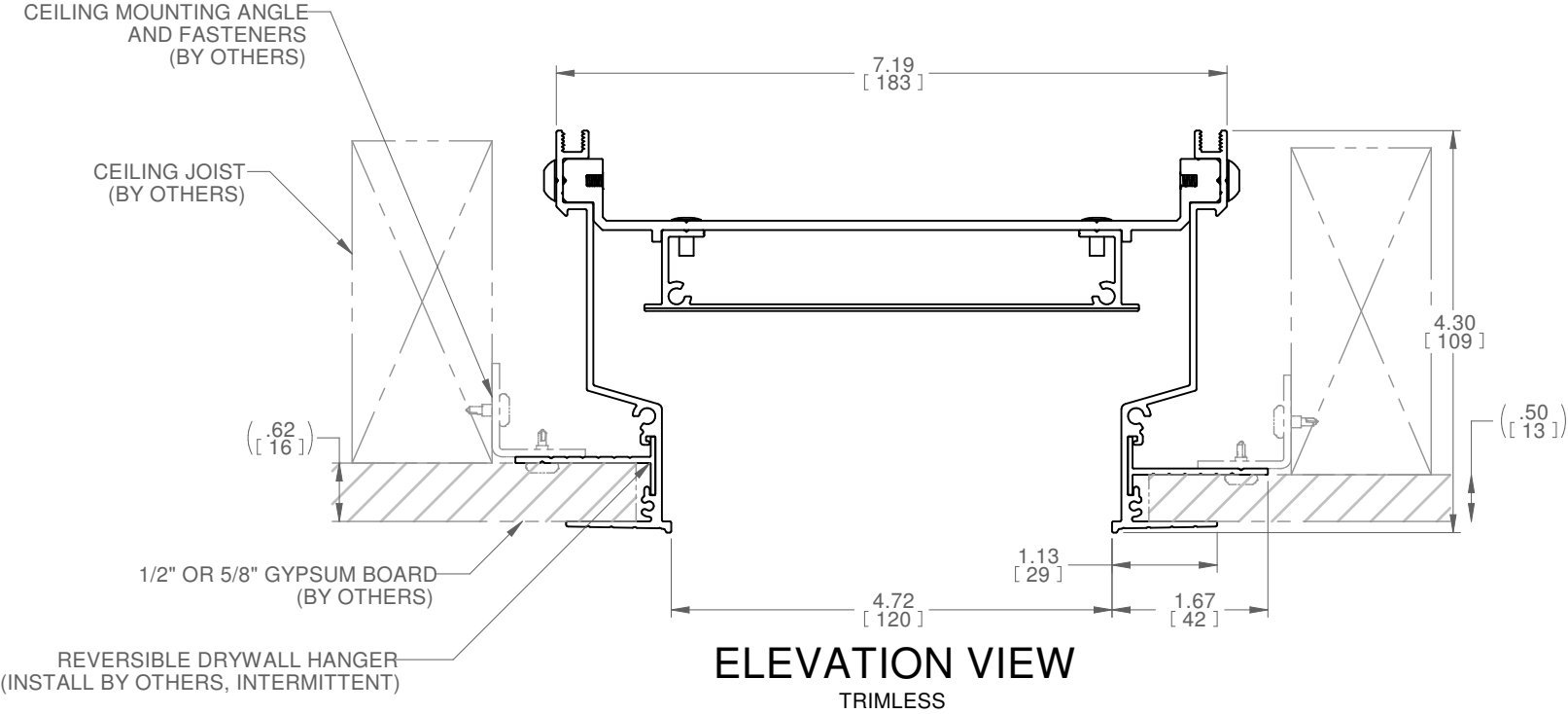
DRAWING TITLE

NODE CHANNEL

SUBMITTAL NUMBER	271710	SHEET 7 OF 9	SIZE B
© COPYRIGHT PRICE INDUSTRIES 2020			

MOUNTING TYPE - RECESSED CHANNEL

- CONSTRUCTION:**
- FLUSH CHANNEL
 - o ALUMINUM EXTRUSION
 - o ALUMINUM SHEET
 - o STEEL SHEET
 - RECESSED CHANNEL
 - o ALUMINUM EXTRUSION
 - o ALUMINUM SHEET
- FINISH:**
- ALL HARDWARE; MILL FINISH UNLESS OTHERWISE SPECIFIED
- ELECTRICAL SERVICE**
- SEE SPECIFIC NODE DEVICE REQUIREMENTS
- MECHANICAL SERVICE**
- CONTACT PRICE SALES REPRESENTATIVE
- CONTROLS**
- CONTROLS BY OTHERS
- NOMENCLATURE**
- ALL COMPONENTS SHOWN ARE PROVIDED BY PRICE UNLESS OTHERWISE NOTED
 - (INSTL BY OTHERS); PROVIDED BY PRICE AND INSTALLED BY OTHERS
 - (BY OTHERS); PROVIDED AND INSTALLED BY OTHERS
 - TBC: DETAILS TO BE CONFIRMED
- NOTES:**
- PRODUCT FINISH MAY VARY IN TONE, GLOSS AND TEXTURE; VARIATIONS ARE WITHIN PRICE INDUSTRIES' QUALITY STANDARDS
 - REFERENCE SUBMITTAL 272380 FOR PLENUM DETAILS



E	2021-03-19	NPT	MLH
D	2020-05-27	NPT	MLH
C	2020-03-25	NPT	MLH
B	2020-03-12	NPT	MLH
A	2019-11-27	NPT	MLH
REV	DATE	DRAWN BY	CHECKED BY

ALL DIMENSIONS IN INCHES UNLESS OTHERWISE SPECIFIED

TOLERANCES UNLESS OTHERWISE SPECIFIED				
LINEAR	X.X ± .06	X.XX ± .03	X.XXX ± .01	INCHES
ANGULAR	X ± 1	X.X ± .5	X.XX ± .25	DEGREES

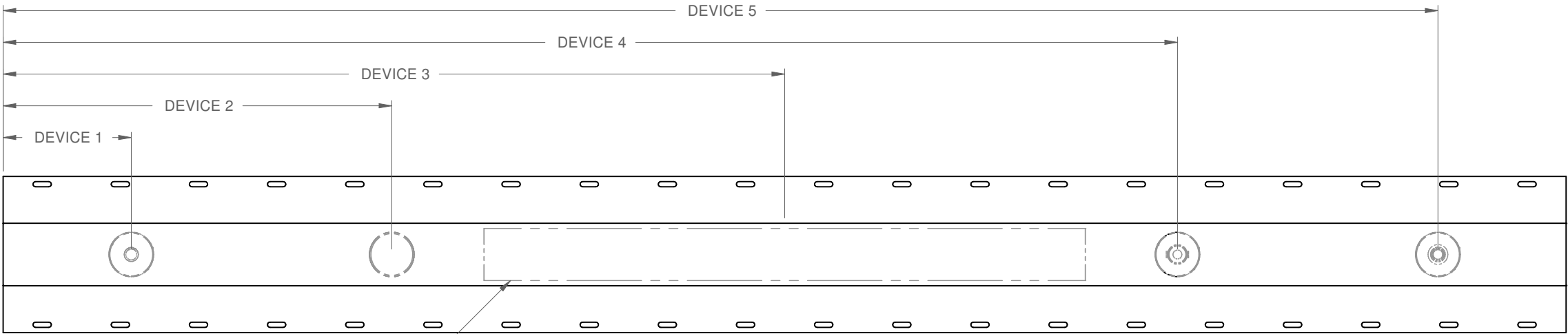
PROJECT

DRAWING TITLE

NODE CHANNEL

SUBMITTAL NUMBER	271710	SHEET 8 OF 9	SIZE B
© COPYRIGHT PRICE INDUSTRIES 2020			

DEVICES



MOUNTING BRACKETS AND HOUSINGS PROVIDED
AND INSTALLED FOR SPECIFIED DEVICE TYPES

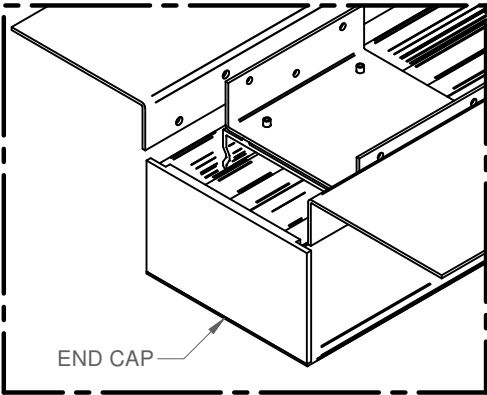
NODE DEVICE LAYOUT
REFLECTED CEILING PLAN

NOTES:

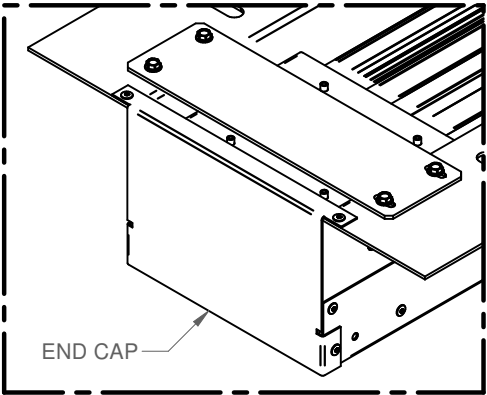
- 1
- CUTOUTS AND HOUSINGS PROVIDED. DEVICES ORDERED SEPARATELY
- 2
- MAXIMUM 5 DEVICES PER CHANNEL (FOR ADDITIONAL DEVICES, CONTACT YOUR SALES REPRESENTATIVE)
- 3
- MINIMUM DEVICE SPACING FROM END OF CHANNEL: 150MM EDGE TO EDGE
- 4
- TYPICAL MINIMUM SPACING BETWEEN DEVICES: 30MM EDGE TO EDGE
- 5
- DOWNLIGHT NOT AVAILABLE WITH TRIMLESS RECESSED CHANNEL
- 6
- FOR THIRD PARTY DEVICE INTEGRATION PLEASE CONTACT YOUR SALES REPRESENTATIVE

BLANK NODE	1.77 [45]
CAMERA	1.77 [45]
DOWNLIGHT	1.77 [45]
EMERGENCY LIGHT	1.77 [45]
LINEAR LIGHT	22.72 [577]
ROSE NODE	1.77 [45]
SENSOR	1.77 [45]
SPEAKER	5.31 [135]
SPOTLIGHT	1.77 [45]
SPRINKLER	1.77 [45]
AVAILABLE DEVICE TYPES	DEVICE C/L TO EDGE

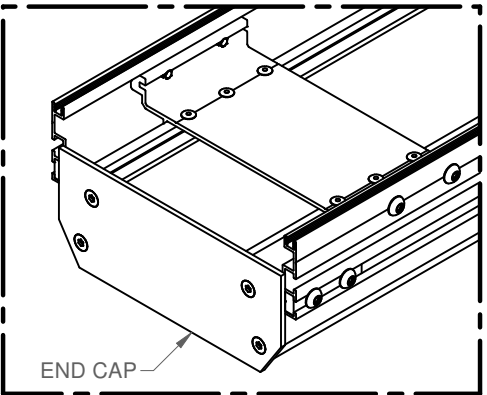
END CONDITIONS



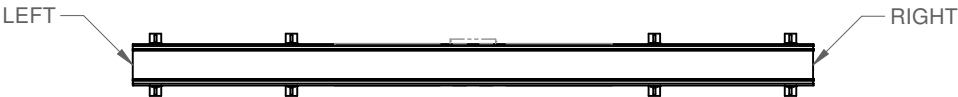
END CAP DETAIL VIEW
FLUSH CHANNEL



END CAP DETAIL VIEW
FLUSH CHANNEL WITH DIFFUSER



END CAP DETAIL VIEW
RECESSED CHANNEL



END CAP LAYOUT
REFLECTED CEILING PLAN

CONSTRUCTION:

- FLUSH CHANNEL
 - o ALUMINUM EXTRUSION
 - o ALUMINUM SHEET
 - o STEEL SHEET
- RECESSED CHANNEL
 - o ALUMINUM EXTRUSION
 - o ALUMINUM SHEET

FINISH:

- ALL HARDWARE; MILL FINISH UNLESS OTHERWISE SPECIFIED

ELECTRICAL SERVICE

- SEE SPECIFIC NODE DEVICE REQUIREMENTS

MECHANICAL SERVICE

- CONTACT PRICE SALES REPRESENTATIVE

CONTROLS

- CONTROLS BY OTHERS

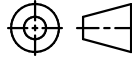
NOMENCLATURE

- ALL COMPONENTS SHOWN ARE PROVIDED BY PRICE UNLESS OTHERWISE NOTED
- (INSTL BY OTHERS): PROVIDED BY PRICE AND INSTALLED BY OTHERS
- (BY OTHERS): PROVIDED AND INSTALLED BY OTHERS
- TBC: DETAILS TO BE CONFIRMED

NOTES:

- PRODUCT FINISH MAY VARY IN TONE, GLOSS AND TEXTURE; VARIATIONS ARE WITHIN PRICE INDUSTRIES' QUALITY STANDARDS
- REFERENCE SUBMITTAL 272380 FOR PLENUM DETAILS

E	2021-03-19	NPT	MLH
D	2020-05-27	NPT	MLH
C	2020-03-25	NPT	MLH
B	2020-03-12	NPT	MLH
A	2019-11-27	NPT	MLH
REV	DATE	DRAWN BY	CHECKED BY



ALL DIMENSIONS IN INCHES UNLESS OTHERWISE SPECIFIED

TOLERANCES UNLESS OTHERWISE SPECIFIED			
LINEAR	X.X ± .06	X.XX ± .03	X.XXX ± .01 INCHES
ANGULAR	X ± 1	X.X ± .5	X.XX ± .25 DEGREES

PROJECT

DRAWING TITLE
NODE CHANNEL

SUBMITTAL NUMBER	271710	SHEET 9 OF 9	SIZE
------------------	--------	--------------	------

© COPYRIGHT PRICE INDUSTRIES 2020

B